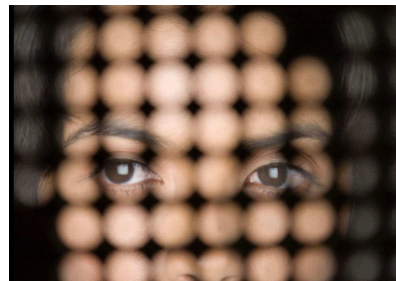




## Litepanels® – 1x1

**Item#: LP**



The Litepanels® 1x1 utilizes the same LED technology incorporated into the Litepanels® “Mini” system. This system is available in both daylight (5600°K) and tungsten (3200°K) versions. The Litepanels® 1x1 has an integrated, full-range (0 to 100%) dimmer that enables dimming with virtually no shift in color. Litepanels® 1x1 allows for array design and utilization in close proximity to walls. A dedicated battery can be placed on the back of the fixture or used remotely up to a distance of 25 ft. with the provided power cable extension. This allows for complete flexibility and the option to isolate this type of Litepanels®. An optional accessory – The gel/filter/diffusion kit makes for a complete system.

- Modular
- Remote Dim
- A/C or Battery Powered
- 1.7” Thick
- 3.5 lbs
- Dimmable 0-100%
- Daylight 5600K, Spot 5600K, or Tungsten 3200K
- Heat Free
- 100,000 hrs

### **Optional Items:**

- 6 Piece Gel Set
- 1.75 Hours Detachable Battery
- 1x1 Power Supply Mounting Plate
- Base Plate w/Ball Head Shoe Mount
- Remote Dimmer Kit
- DMX Interface Module
- 1x1 V-Mount Battery Adapter Plate
- 1x1 Anton Bauer Gold-Mount Battery Adapter Plate